

## Scott Raborn

---

**From:** Scott Raborn  
**Sent:** Friday, July 5, 2024 7:27 PM  
**To:** Jordan Head  
**Cc:** Michael Link; Jeff Regnart; Scott Raborn  
**Subject:** PMTF Catch Update #26, July 5, 2024  
**Attachments:** PMTF Catch Update #26, July 5, 2024.pdf; PMTF\_RawData - July 5 2024.pdf

Please find attached today's catch update table and the raw data. Below the catch update table, we have included three figures. Figure 1 is the usual C+E and the Daily Catch Index to date compared to previous years. Current and historical C+E is parsed by district in Figure 2. For Figure 3, we have parsed the Daily Catch Index by district (top panel) and moved C+E to date to a bottom panel to facilitate comparison.

**PMTF Stock Composition Status:** Stock Composition #10 (July 4-5) should be released tomorrow (July 6).

### Index by Station

S4: 14  
S6: 85  
S8: 43  
S10: 202  
S12: 47  
S14: 176  
S16: 37  
S18: 56  
S20: 112  
S22: 20  
S24: 7

Daily Catch Index=73

Scott and Jordan

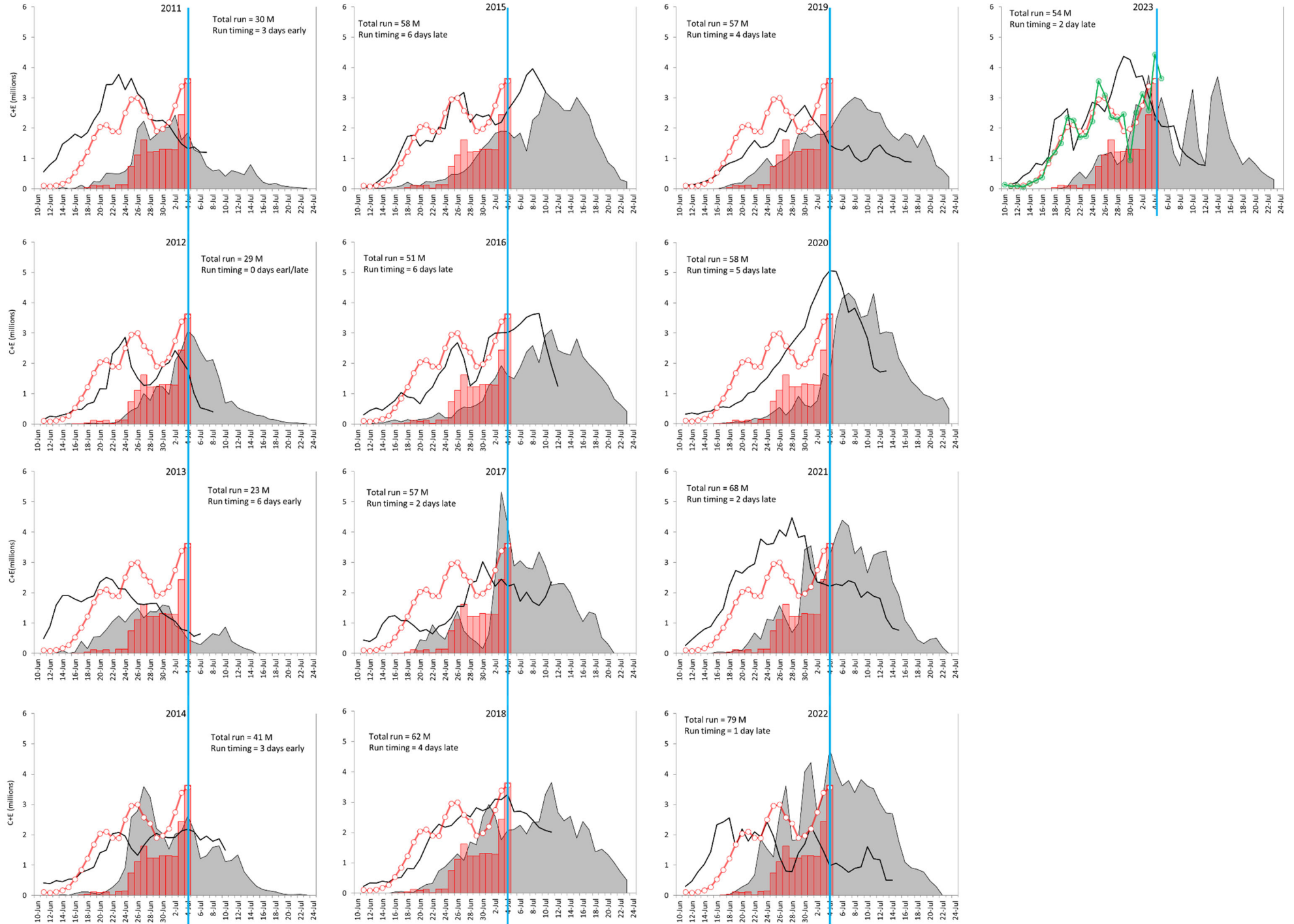
**Port Moller Test Fishery: Catch Update #26, 5 July 2024.**

All updates sent by email are also posted online at [www.bbsri.org](http://www.bbsri.org)

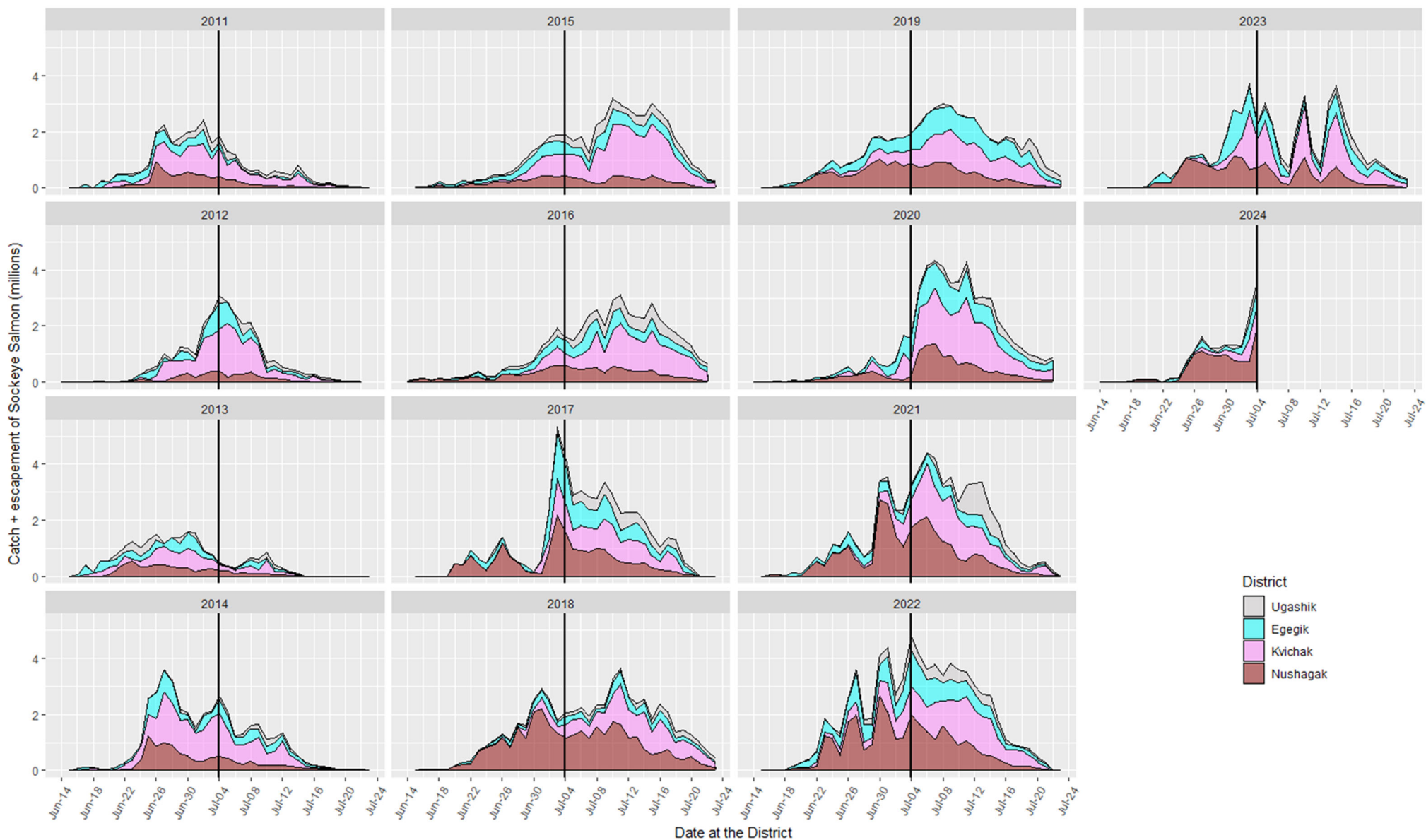
Date	Daily Catch Index by Station (Est. catch from the 200 fathom net if it had fished for 1 hr)												Mean Daily Catch Index Avg. Indices Across Stations (Stns 2-22)	Raw catches		Mean Length (mm)	
	S2	S4	S6	S8	S10	S12	S14	S16	S18	S20	S22	S24		4½" mesh	5½" mesh	4½" mesh	5½" mesh
10-Jun	3	2	0	11	14	0	0	0	0	0	0	0	3	12	2	470	501
11-Jun	0	0	14	0	0	2	0	0	2	2	0	0	2	9	0	475	
12-Jun	3	3	5	0	10	3	0	0	0	0	0	3	2	4	7	499	511
13-Jun	3	0	0	0	3	0	4	0	2	0	3	0	1	6	1	476	533
14-Jun	0	0	8	8	0	22	0	0	3	0	0	0	4	5	11	474	506
15-Jun	0	0	0	29	6	7	0	2	0	15	0	0	5	24	5	471	536
16-Jun	2	0	0	29	8	28	2	3	7	0	5	0	8	19	19	475	511
17-Jun	2	0	56	22	101	0	2	4	11	13	0	2	19	56	51	468	497
18-Jun	0	0	42	75	105	22	2	2	4	10	2	2	24	43	79	476	497
19-Jun	0	36	25	0	4	54	39	0	75	92	4	4	30	131	34	481	519
20-Jun	0	0	136	88	114	43	88	5	0	41	2	0	47	161	113	480	507
21-Jun	6	23	56	68	114	150	33	2	0	35	11	7	45	160	97	485	512
22-Jun	7	58	73	54	105	21	0	2	6	41	8	0	34	126	67	487	517
23-Jun	0	14	62	39	55	23	45	42	34	54	14	0	35	113	79	482	500
24-Jun	0	85	130	26	116	5	32	18	30	21	28	2	45	170	60	483	506
25-Jun	0	3	132	95	306	73	0	9	108	32	25	14	71	218	183	483	507
26-Jun	7	31	219	152	102	45	23	20	25	30	27	17	62	92	43	493	514
27-Jun	6	0	203	135	74	5	12	7	21	28	27	20	47	143	70	486	511
28-Jun	0	7	90	82	89	2	47	28	14	95	50	0	46	165	67	485	514
29-Jun	5	43	4	302	114	25	29	2	8	11	0	27	49	214	113	489	510
30-Jun	0	2	3	21	99	35	21	0	0	27	2	39	19	60	51	483	516
1-Jul	5	93	124	88	156	46	7	2	0	23	12	104	50	166	110	489	509
2-Jul	0	8	69	297	243	50	3	3	7	6	4	5	63	224	174	489	508
3-Jul	0	0	73	64	188	45	27	111	18	29	15	0	52	189	131	496	511
4-Jul	2	114	158	140	359	21	36	33	21	64	27	17	89	393	173	496	519
5-Jul	10	14	85	43	202	47	176	37	56	112	20	7	73	303	99	492	514
6-Jul	-	-	-	-	-	-	-	-	-	-	-	-	-	-	-	-	-
7-Jul	-	-	-	-	-	-	-	-	-	-	-	-	-	-	-	-	-
8-Jul	-	-	-	-	-	-	-	-	-	-	-	-	-	-	-	-	-
9-Jul	-	-	-	-	-	-	-	-	-	-	-	-	-	-	-	-	-
10-Jul	-	-	-	-	-	-	-	-	-	-	-	-	-	-	-	-	-
11-Jul	-	-	-	-	-	-	-	-	-	-	-	-	-	-	-	-	-
12-Jul	-	-	-	-	-	-	-	-	-	-	-	-	-	-	-	-	-
13-Jul	-	-	-	-	-	-	-	-	-	-	-	-	-	-	-	-	-
Mean Stn Index	2	21	68	72	103	30	24	13	17	30	11	10	Total =	3206 (64%)	1839 (36%)	487	510

Red index values were estimated with a statistical model built upon the observed pattern across catch indices to date; thus, these values are subject to change as the season progresses.

**Figure 1.** PMTF Daily Index and inshore catch + escapement (C+E) for 2011-2024. Gray area curve = observed C+E for historical years scaled to the left vertical axis; red columns = observed C+E for 2024. Black lines = respective Daily PMTF Catch Indices for each historical year; the red line = a 3-day moving average of the Daily Catch Index for 2024 based on Stations 2-22 (units for the daily indices are not shown, but all graphs are scaled the same). The green line shown for the 2023 panel reflects the 2024 Daily Catch Index without a moving average. Catch Indices for years prior to 2018 represent the average catch-per-unit-effort (CPUE) across Stations 2-10. Furthermore, a shallower net (6 m deep) was used during 2011-2019; beginning in 2020 the net depth has been 11 m deep. Run timing for C+E was estimated by comparing each year's date when 50% of the run reached inshore to July 4. Blue vertical lines highlight



**Figure 2.** Catch plus escapement by district for 2011-2024. The black vertical line specifies July 4 in each year to facilitate comparisons.



**Figure 3. (A)** The 2024 Port Moller Daily Catch Index (averaged from Stations 2-24) parsed by district based on genetic stock composition estimates. **(B)** Observed C+E parsed by district. District colors are approximations of those used for stocks by ADF&G's gene lab in their stock composition reports.

