

## Scott Raborn

---

**From:** Scott Raborn  
**Sent:** Thursday, July 4, 2024 9:08 PM  
**To:** Jordan Head  
**Cc:** Michael Link; Scott Raborn; Jeff Regnart  
**Subject:** PMTF Catch Update #25, July 4, 2024  
**Attachments:** PMTF Catch Update #25, July 4, 2024.pdf; PMTF\_RawData - July 4 2024.pdf

Happy 4<sup>th</sup> of July everyone, and here we got an update for you!

Please find attached today's catch update table and the raw data. Below the catch update table, we have included three figures. Figure 1 is the usual C+E and the Daily Catch Index to date compared to previous years. Current and historical C+E is parsed by district in Figure 2. For Figure 3, we have parsed the Daily Catch Index by district (top panel) and moved C+E to date to a bottom panel to facilitate comparison.

The Daily Catch Index was substantially higher than the previous three days and the highest it has been all year. Indices increased at almost every station. While fishing conditions (wave height and wind) were better today than the previous three days we feel safe in concluding that the passage rate likely increased today. This suggests a run timing that is later than we previously thought; our best guess is that 50% of C+E will occur inshore no sooner than ~July 9.

**PMTF Stock Composition Status:** Stock Composition #10 (July 4-5) should be released Saturday (July 6).

### Index by Station

S2: 2  
S4: 114  
S6: 158  
S8: 140  
S10: 359  
S12: 21  
S14: 36  
S16: 33  
S18: 21  
S20: 64  
S22: 27  
S24: 17

Daily Catch Index=89

Scott and Jordan

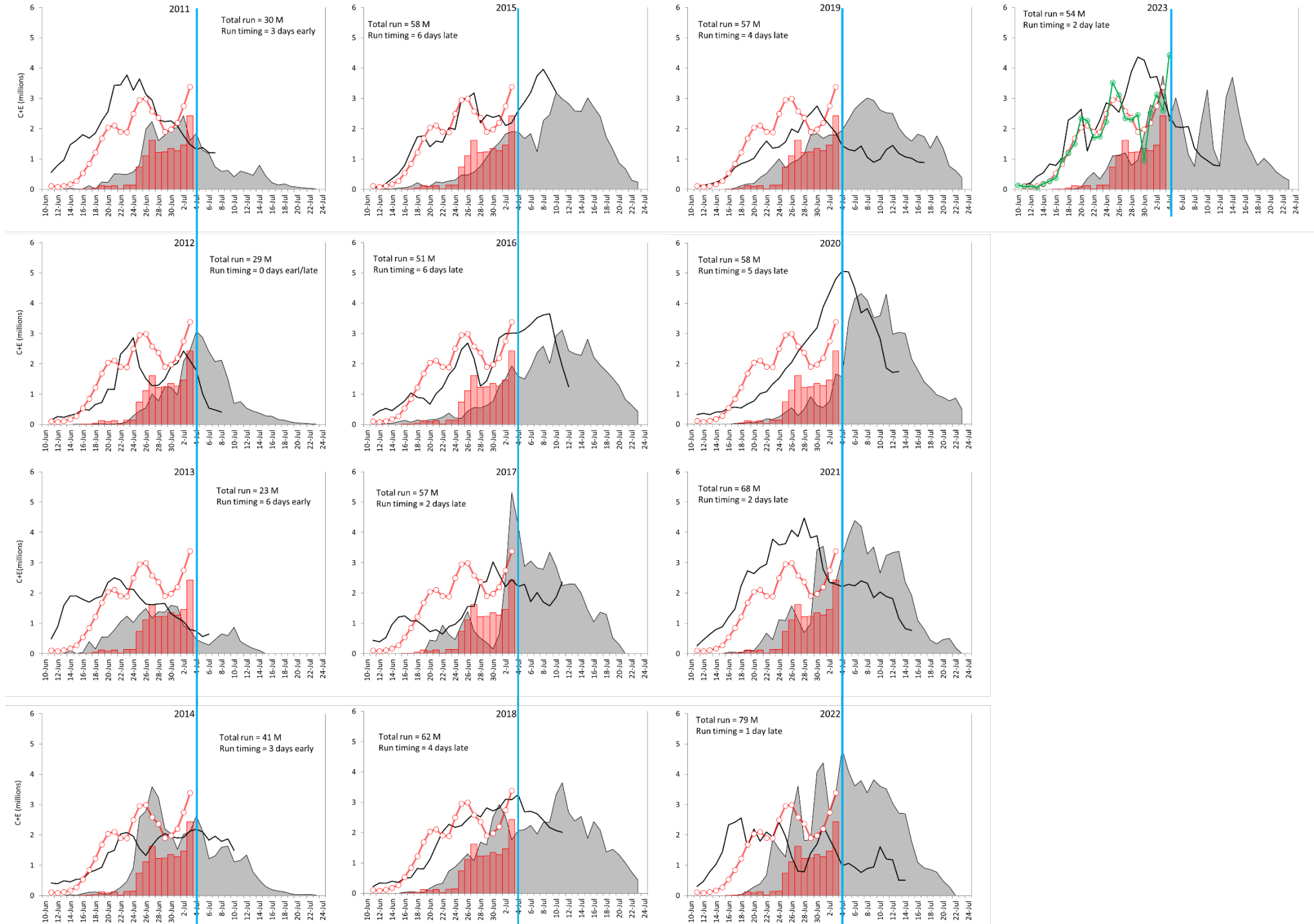
**Port Moller Test Fishery: Catch Update #25, 4 July 2024.**

All updates sent by email are also posted online at [www.bbsri.org](http://www.bbsri.org)

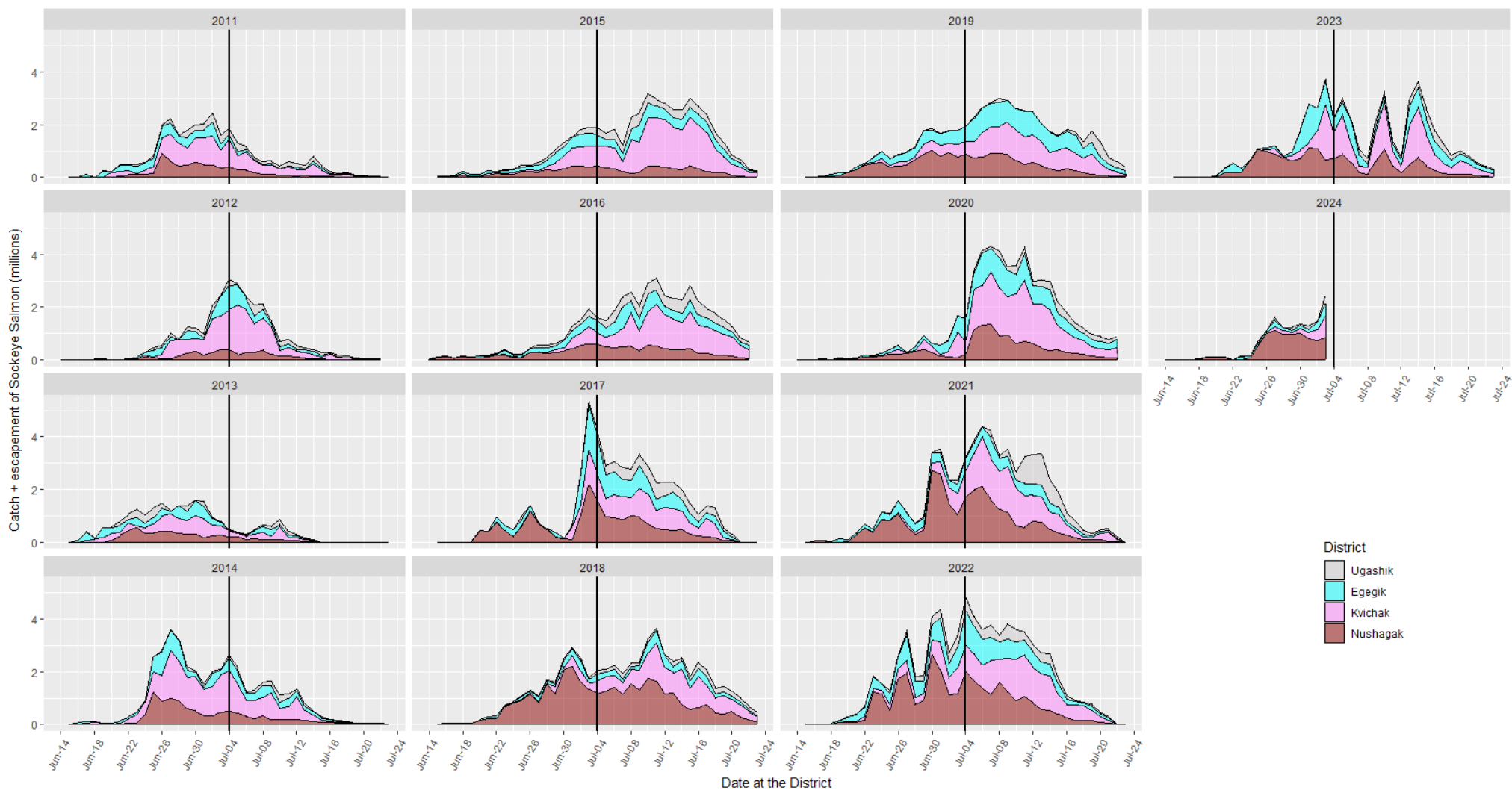
Date	Daily Catch Index by Station (Est. catch from the 200 fathom net if it had fished for 1 hr)												Mean Daily Catch Index Avg. Indices Across Stations (Stns 2-22)	Raw catches		Mean Length (mm)	
	S2	S4	S6	S8	S10	S12	S14	S16	S18	S20	S22	S24		4½" mesh	5½" mesh	4½" mesh	5½" mesh
	10-Jun	3	2	0	11	14	0	0	0	1	1	0		0	3	12	2
11-Jun	0	0	14	0	0	2	0	0	2	2	0	0	2	9	0	475	
12-Jun	3	3	5	0	10	3	0	0	0	0	0	3	2	4	7	499	511
13-Jun	3	0	0	0	3	0	4	0	2	0	3	0	1	6	1	476	533
14-Jun	0	0	8	8	0	22	0	0	3	0	0	0	4	5	11	474	506
15-Jun	0	0	0	29	6	7	0	2	0	15	0	0	5	24	5	471	536
16-Jun	2	0	0	29	8	28	2	3	7	0	5	0	8	19	19	475	511
17-Jun	2	0	56	22	101	0	2	4	11	13	0	2	19	56	51	468	497
18-Jun	0	0	42	75	105	22	2	2	4	10	2	2	24	43	79	476	497
19-Jun	0	36	25	0	4	54	39	0	75	92	4	4	30	131	34	481	519
20-Jun	0	0	136	88	114	43	88	5	0	41	2	0	47	161	113	480	507
21-Jun	7	23	56	68	114	150	33	2	0	35	11	7	45	160	97	485	512
22-Jun	7	58	73	54	105	21	0	2	6	41	8	0	34	126	67	487	517
23-Jun	0	14	62	39	55	23	45	42	34	54	14	0	35	113	79	482	500
24-Jun	0	85	130	26	116	5	32	18	30	21	28	2	45	170	60	483	506
25-Jun	0	3	132	95	306	73	0	9	108	30	21	12	71	218	183	483	507
26-Jun	6	28	219	162	104	43	23	21	26	29	23	14	62	92	43	493	514
27-Jun	6	0	203	135	74	5	12	7	21	28	25	17	47	143	70	486	511
28-Jun	0	7	90	82	89	2	47	28	14	95	50	0	46	165	67	485	514
29-Jun	5	43	4	302	114	25	29	2	8	11	0	27	49	214	113	489	510
30-Jun	0	2	3	21	99	35	21	0	0	27	2	39	19	60	51	483	516
1-Jul	5	93	124	88	156	46	7	2	0	23	12	104	50	166	110	489	509
2-Jul	0	8	69	297	243	50	3	3	7	6	4	5	63	224	174	489	508
3-Jul	0	0	73	64	188	45	27	111	18	29	15	0	52	189	131	496	511
4-Jul	2	114	158	140	359	21	36	33	21	64	27	17	89	393	173	496	519
5-Jul	-	-	-	-	-	-	-	-	-	-	-	-	-	-	-	-	-
6-Jul	-	-	-	-	-	-	-	-	-	-	-	-	-	-	-	-	-
7-Jul	-	-	-	-	-	-	-	-	-	-	-	-	-	-	-	-	-
8-Jul	-	-	-	-	-	-	-	-	-	-	-	-	-	-	-	-	-
9-Jul	-	-	-	-	-	-	-	-	-	-	-	-	-	-	-	-	-
10-Jul	-	-	-	-	-	-	-	-	-	-	-	-	-	-	-	-	-
11-Jul	-	-	-	-	-	-	-	-	-	-	-	-	-	-	-	-	-
12-Jul	-	-	-	-	-	-	-	-	-	-	-	-	-	-	-	-	-
13-Jul	-	-	-	-	-	-	-	-	-	-	-	-	-	-	-	-	-
Mean Stn Index	2	21	67	73	100	29	18	12	16	27	10	10	Total =	2903 (63%)	1740 (37%)	487	510

Red index values were estimated with a statistical model built upon the observed pattern across catch indices to date; thus, these values are subject to change as the season progresses.

**Figure 1.** PMTF Daily Index and inshore catch + escapement (C+E) for 2011-2024. Gray area curve = observed C+E for historical years scaled to the left vertical axis; red columns = observed C+E for 2024. Black lines = respective Daily PMTF Catch Indices for each historical year; the red line = a 3-day moving average of the Daily Catch Index for 2024 based on Stations 2-22 (units for the daily indices are not shown, but all graphs are scaled the same). The green line shown for the 2023 panel reflects the 2024 Daily Catch Index without a moving average. Catch Indices for years prior to 2018 represent the average catch-per-unit-effort (CPUE) across Stations 2-10. Furthermore, a shallower net (6 m deep) was used during 2011-2019; beginning in 2020 the net depth has been 11 m deep. Run timing for C+E was estimated by comparing each year's date when 50% of the run reached inshore to July 4. Blue vertical lines highlight



**Figure 2.** Catch plus escapement by district for 2011-2024. The black vertical line specifies July 4 in each year to facilitate comparisons.



**Figure 3. (A)** The 2024 Port Moller Daily Catch Index (averaged from Stations 2-24) parsed by district based on genetic stock composition estimates. **(B)** Observed C+E parsed by district. District colors are approximations of those used for stocks by ADF&G's gene lab in their stock composition reports.

